



Contact US

Website: <https://www.switcgearfactory.com/>

LinkedIn: www.linkedin.com/company/dsj-electrical

Youtube: www.youtube.com/@DSJElectric

Email: info@dsjpowerlink.com

Address: FLC Center, Chaoyang, Beijing, China



-Generator- Product Catalog DSJ Electrical Co.,Ltd





About DSJ

Building Power, Building Trust: **42 Years of Excellence**

Founded in 1983, DSJ has established itself as a leading force in China's electrical distribution industry, with 42 years of expertise in both medium-voltage and low-voltage electrical products.

As an outstanding enterprise, DSJ boasts independent research, development, production, and sales capabilities, ensuring that we can meet customers' needs with the fastest delivery and the highest level of customization. Our workforce consists of over 300 employees, including 50 senior management professionals, 30 experienced engineers, 8 senior designers, and 5 senior technicians.

We specialize in the manufacturing of distribution, circuit protection, and photovoltaic products that exceed both national and international quality standards. Over the past 40 years, DSJ has provided high-quality, safe electrical products to public facilities, large enterprises, and residential sectors worldwide, with one of the lowest return rates in the industry.

As a well-recognized Chinese brand, DSJ is dedicated to upholding our brand integrity. We adhere to the core philosophy of "Quality First, Customer Priority, and Integrity at the Core," striving to bring premium Chinese power equipment and exceptional service capabilities to customers worldwide.

Core Ideology

Quality First

Customer Priority

Integrity at the Core

 **40+**
Years of Excellence

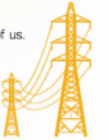
Established in 1983, DSJ has delivered trusted solutions for over four decades, solidifying its position as a pioneer in electrical equipment.

 **15,000+**
Square Meters of Facility

Strong manufacturing capabilities, with the capacity to produce 8,000 units per month.

 **\$108**
Million in Revenue

The continuous growth in sales volume demonstrates the market's recognition of us.



Factory Introduction



DSJ is a financially robust company with a registered capital of **7.84 million USD** and a facility spanning more than **15,000 square meters**.

Our production capabilities are supported by **30 units** of intelligent product testing and debugging equipment, **50 machine tools**, and **6 automated production lines**.

DSJ is also home to four innovation laboratories, holding more than **60 national invention patents**.

Crafting Quality Electrical Products for Over 40 Years



Honors and Certifications

• We are holding more than 60 national invention patents

Invention Patent



Utility Model Patent



• We have been awarded numerous prestigious national-level honors



ENGINEERING CASES

Real estate projects

COUNTRY GARDEN/GUOXIA GROUP/AGILE REAL ESTATE/LIAN-TAI GROUP.....



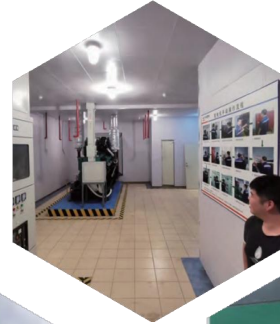
Municipal project

HOSPITALS/SCHOOLS/MUSEUMS/NURSING HOMES/DRAINAGE STATIONS/AIRPORTS...



Enterprise power supply

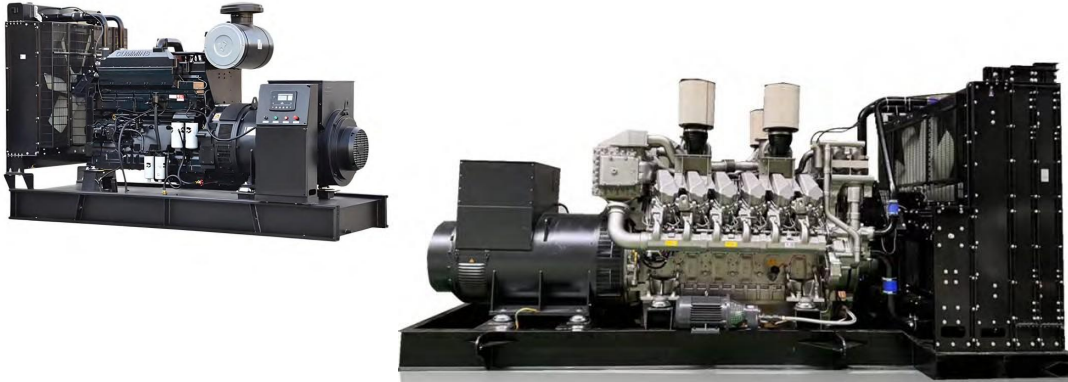
SF EXPRESS/VIPSHOP/JING-DONG/CHIMELONG GROUP/SAN-HE GROUP.....



FOSHAN RAIL TRANSIT LINE 2 / HEHUI DONGGUAN EXPRESSWAY/HONG KONG-ZHUHAI-MACAO BRIDGE.....

Rail traffic

PRODUCT INTRODUCTION



Stationary type Diesel Generator

THE GENERATOR SET CAN BE CUSTOMIZED ACCORDING TO THE NEEDS OF USERS INTO STATIONARY OPEN TYPE, STATIONARY SILENT TYPE, SILENT TRAILER TYPE AND OTHER MODES; THE GENERATOR SET IS MAINLY COMPOSED OF FOUR PARTS: ENGINE, ALTERNATOR, WATER TANK D INSTALLED ON THE PUBLIC CHASSIS IN A COMPLETE SET. THE OUTPUT SWITCH OR ATS SWITCHING SWITCH IS INSTALLED AT THE POWER OUTPUT TERMINAL.

Standard Configuration

Engine
Alternator
Control panel
Output system
Starting with lead-acid battery and connecting wire
Battery charger
Negative terminal switch
40°C Radiator
Industrial muffler
Steel base frame

Option Configuration

Auto communication control system
3-remote communication control system
Auto synchronizing control system
ATS panel
50°C Radiator
Water jacket heater
Base frame/ Daily fuel tank
Special tools



Stationary Soundproof Diesel Generator

- Small size, compact conformation, sophisticated technology, beautiful appearance, easy to transport and install
- There're lifting lugs and cable loops on the top of the canopy, and forklift groove, drag holes and mounting holes at the chasis of the canopy
- Easy to operate: integrated control system makes it easy to operate and convenient to splice wire
- Advanced waterproof and dust prevention design.

Other products



COMPANY PRODUCTS



CUMMINS Series



Cummins series diesel generator set adopt the sino-us joint Cummins engine as power, its reliability, economy has been won troops, engineering, industrial mining enterprises trust. Cummins company founded in February 1919, it has been a hundred years, its headquarters in Columbus, Indiana (USA), Cummins has more than 500 distribution agencies and more than 6,500 service outlets in more than 190 countries and regions around the world, providing reliable service guarantee for the customers.

As the largest foreign investor in the Chinese engine industry, Cummins owns manufacturing companies such as Dongfeng Cummins Engine Co. Ltd. (production of B, C, L series) and Chongqing Cummins Engine Co. Ltd. (production of M, N, K series). In order to meet the increasingly stringent emission requirements of the world.

Cummins has continuously introduced and developed new products that meet market demands. At present, the full range of Cummins engines that meet China III emission standards have been launched on the market.

Standard configuration

✓ Diesel engine	✓ Alternator	✓ 40°C water cooled radiator	✓ Intelligent controller
✓ Steel base	✓ out switch	✓ Silencer and flexible exhaust hose	✓ maintenance-free battery

Optional configuration

e Soundproof case	e ATS	e 50°C water cooled radiator	e Water heater
e Oil heater	e Trailer	e Automatic parallel synchronizing control system	



CUMMINS DCEC Series diesel generator

(Emission: Stage 2)



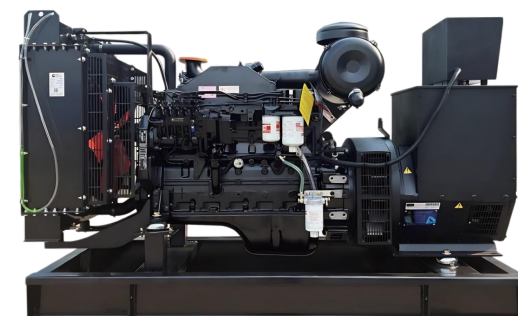
Model	KW	KVA	Current	Engine Mode	CDSJindex	Bore×Stroke	Engine capacity	Lub capacity	Consumption	Size(mm)	Weight(kg)
DSJGF-17DC	17/19	21/24	30.6A	4B3.9-G11	4	102*120	3.9L	11L	5.7L/h	1650*720*1200	700
DSJGF-22DC	22/24	27.5/30	40A	4B3.9-G2	4	102*120	3.9L	11L	6.7L/h	1650*720*1200	720
DSJGF-25DC	25/27	31/34	45A	4B3.9-G12	4	102*120	3.9L	11L	7.4L/h	1650*720*1200	770
DSJGF-32DC	32/35	40/44	57.6A	4BT3.9-G2	4	102*120	3.9L	11L	9.3L/h	1700*720*1200	800
DSJGF-45DC	45/50	56/62.5	81A	4BTA3.9-G2	4	102*120	3.9L	11L	12.9L/h	1800*750*1200	850
DSJGF-52DC	52/56	65/70	93.6A	4BTA3.9-G2	4	102*120	3.9L	11L	14.9L/h	1800*750*1200	950
DSJGF-64DC	64/72	80/90	115.2A	4BTA3.9-G11	4	102*120	3.9L	11L	17.6L/h	1850*800*1300	1000
DSJGF-76DC	76/84	95/105	136.8A	4BTA3.9-G13	4	102*120	3.9L	11L	18.8L/h	1850*800*1300	1030
DSJGF-80DC	80/88	100/110	144A	4BTAA3.9-G3	4	102*120	3.9L	11L	24.7L/h	1850*800*1300	1050
DSJGF-75DC	75/82	94/102.5	135A	6BT5.9-G2	6	102*120	5.9L	16L	22.3L/h	2150*800*1200	1070
DSJGF-84DC	84/92	105/115	151A	6BT5.9-G2	6	102*120	5.9L	16L	24.2L/h	2150*800*1200	1100
DSJGF-92DC	92/100	115/125	165.6A	6BTA5.9-G2	6	102*120	5.9L	16L	27.0L/h	2200*820*1320	1150
DSJGF-108DC	108/116	135/145	194.4A	6BTAA5.9-G2	6	102*120	5.9L	16L	30.0L/h	2350*820*1200	1200
DSJGF-120DC	120/132	150/165	216A	6BTAA5.9-G12	6	102*120	5.9L	16L	34L/h	2350*820*1200	1350
DSJGF-145DC	145/160	181/200	261A	6CTA8.3-G2	6	114*135	8.3L	11L	42L/h	2390*900*1350	1460
DSJGF-160DC	160/172	200/215	288A	6CTAA8.3-G2	6	114*135	8.3L	24L	45L/h	2500*950*1500	1650
DSJGF-180DC	Max 200	Max 250	360A	6CTAA8.3-G9	6	114*135	8.3L	24L	57L/h	2500*950*1500	1750
DSJGF-200DC	200/211	250/264	360A	6LTAA8.9-G2	6	114*145	8.9L	28L	53L/h	2560*980*1640	1890
DSJGF-200DC	200/220	250/275	360A	6LTAA8.9-G3	6	114*145	8.9L	28L	54L/h	2600*970*1500	2000
DSJGF-216DC	216/240	270/300	388.8A	6LTAA9.5-G3	6	116.5*148	9.5L	32L	58L/h	2700*1100*1550	2100
DSJGF-256DC	256/280	320/350	460.8A	6LTAA9.5-G1	6	116.5*148	9.5L	32L	70L/h	2760*1130*1580	2100
DSJGF-310DC	310/340	387.5/425	558A	6ZTAA13-G3	6	130*163	13L	45L	74.7L/h	2900*1200*1750	3000

DSJGF-350DC	350/380	437.5/475	630A	6ZTAA13-G2	6	130*163	13L	45L	87.1L/h	2900*1200*1750	3200
DSJGF-350DC	350/380	437.5/475	630A	6ZTAA13-G4	6	130*163	13L	45L	91L/h	3200*1360*1950	3200
DSJGF-350DC	350/375	437.5/469	630A	QSZ13-G2	6	130*163	13L	45L	88.8L/h	3150*1370*1900	3300
DSJGF-380DC	380/400	475/500	684A	QSZ13-G3	6	130*163	13L	45L	101L/h	3150*1370*1900	3500
DSJGF-360DC	360/400	450/500	648A	QSZ13-G5	6	130*163	13L	45L	93.2L/h	3150*1370*1900	3500
DSJGF-400DC	400/440	500/550	720A	QSZ13-G10	6	130*163	13L	45L	107L/h	3150*1370*1900	3500



CUMMINS DCEC Series diesel generator

(Emission: Stage 3)



Model	KW	KVA	Current	Engine Mode	CDSJinder	Bore×Stroke	Engine capacity	Lub capacity	Consumption	Size(mm)	Weight(kg)
DSJGF-22DC	22/24	27.5/30	40A	QSB3.9-G31	4	102*120	3.9L	11L	6.1L/h	1650*720*1200	700
DSJGF-32DC	32/35	40/44	57.6A	QSB3.9-G33	4	102*120	3.9L	11L	8.8L/h	1650*720*1200	720
DSJGF-52DC	52/56	65/70	93.6A	QSB3.9-G35	4	102*120	3.9L	11L	14.2L/h	1650*720*1200	770
DSJGF-48DC	48/56	60/70	86.4A	QSB3.9-G2	4	102*120	3.9L	11L	18L/h	1750*850*1350	800
DSJGF-64DC	64/72	80/90	115.2A	QSB3.9-G3	4	102*120	3.9L	11L	20L/h	1800*900*1400	850
DSJGF-70DC	70/75	87.5/94	126A	QSB3.9-G37	4	102*120	3.9L	11L	19.8L/h	1800*900*1400	950
DSJGF-80DC	80/88	100/110	144A	QSB3.9-G39	4	102*120	3.9L	11L	23.6L/h	1850*900*1400	980
DSJGF-80DC	80/88	100/110	144A	QSB5.9-G2	6	102*120	5.9L	16L	26L/h	2160*800*1300	1100
DSJGF-90DC	90/100	112.5/125	162A	QSB5.9-G30	6	102*120	5.9L	16L	27.7L/h	2160*800*1300	1100
DSJGF-100DC	100/112	125/140	180A	QSB5.9-G3	6	102*120	5.9L	16L	31L/h	2200*800*1300	1150
DSJGF-100DC	100/120	125/150	180A	QSB5.9-G31	6	102*120	5.9L	16L	31.5L/h	2200*800*1300	1150
DSJGF-120DC	120/132	150/165	216A	QSB5.9-G33	6	102*120	5.9L	16L	37.9L/h	2250*850*1300	1250
DSJGF-120DC	120/132	150/165	216A	QSB6.7-G3	6	107*124	6.7L	20L	38L/h	2300*850*1300	1400
DSJGF-144DC	144/160	180/200	259A	QSB6.7-G4	6	107*124	6.7L	20L	43L/h	2300*850*1300	1450
DSJGF-150DC	150/165	187.5/206	270A	QSB6.7-G32	6	107*124	6.7L	20L	40.4L/h	2400*900*1400	1450
DSJGF-180DC	180/200	225/250	324A	QSB6.7-G31	6	107*124	6.7L	20L	48.8L/h	2400*900*1400	1650
DSJGF-160DC	160/176	200/220	288A	QSL8.9-G2	6	114*145	8.9L	28L	55L/h	2640*970*1450	1700
DSJGF-180DC	180/200	225/250	324A	QSL8.9-G3	6	114*145	8.9L	28L	57L/h	2650*1050*1450	1700
DSJGF-200DC	200/220	250/275	360A	QSL8.9-G4	6	114*145	8.9L	28L	60L/h	2650*1050*1450	2000

DSJGF-200DC	200/220	250/275	360A	QSL8.9-G34	6	114*145	8.9L	28L	58.4L/h	2700*1050*1450	2000
DSJGF-230DC	230/250	287.5/312.5	414A	QSL8.9-G33	6	114*145	8.9L	28L	64.8L/h	2700*1050*1450	2100
DSJGF-256DC	256/280	320/350	461A	QSL8.9-G30	6	114*145	8.9L	28L	68.6L/h	2700*1050*1450	2300
DSJGF-288DC	288/320	360/400	518.4A	QSZ13-G6	6	130*163	13L	75L	81.6L/h	2850*1050*1450	3000
DSJGF-320DC	320/360	400/450	576A	QSZ13-G7	6	130*163	13L	75L	89.2L/h	2950*1050*1450	3100



CUMMINS CCEC Series diesel generator

(Emission: Stage 2)



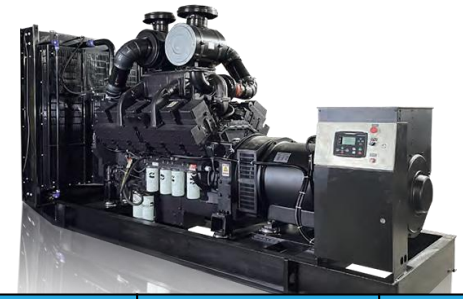
Model	KW	KVA	Current	Engine Mode	CDSJinder	Bore×Stroke	Engine capacity	Lub capacity	Consumption	Size(mm)	Weight(kg)
DSJGF-200CC	200/220	250/275	360A	MTA11-G2	6	125*147	10.8L	36.7L	52L/h	2800*1050*1550	2100
DSJGF-200CC	200/220	250/275	360A	NT855-GA	6	140*152	14L	38.6L	59L/h	3000*1050*1650	2480
DSJGF-200CC	200/220	250/275	360A	NTA855-G1	6	140*152	14L	38.6L	59L/h	3100*1150*1680	2500
DSJGF-220CC	220/250	275/312.5	396A	NTA855-G1A	6	140*152	14L	38.6L	61L/h	3100*1150*1680	2500
DSJGF-250CC	250/280	312.5/350	450A	MTAA11-G3	6	125*147	10.8L	36.7L	62L/h	2870*1150*1550	2300
DSJGF-250CC	250/280	312.5/350	450A	NTA855-G1B	6	140*152	14L	38.6L	71L/h	3100*1150*1700	2800
DSJGF-250CC	250/280	312.5/350	450A	NTA855-G2	6	140*152	14L	38.6L	71L/h	3050*1150*1700	2800
DSJGF-275CC	275/300	344/375	495A	NTA855-G2A	6	140*152	14L	38.6L	72L/h	3050*1150*1700	2900
DSJGF-280CC	280/310	350/387.5	504A	NTA855-G4	6	140*152	14L	38.6L	75L/h	3150*1040*1900	3000
DSJGF-300CC	300/330	375/412.5	540A	NTAA855-G7	6	140*152	14L	38.6L	85L/h	3200*1050*1900	3100
DSJGF-327CC	---/360	---/450	588A	NTAA855-G7A	6	140*152	14L	38.6L	91L/h	3300*1250*1900	3100
DSJGF-300CC	300/330	375/412.5	540A	KTA19-G2	6	159*159	19L	50L	85L/h	3500*1300*1950	3300
DSJGF-360CC	360/400	450/500	648A	KTA19-G3	6	159*159	19L	50L	98L/h	3500*1300*1950	3600
DSJGF-400CC	400/450	500/562.5	720A	KTA19-G3A	6	159*159	19L	50L	108L/h	3500*1380*1980	3600
DSJGF-400CC	400/450	500/562.5	720A	KTA19-G4	6	159*159	19L	50L		3500*1380*1980	4000
DSJGF-420CC	420/505	525/631	756A	KTAA19-G5	6	159*159	19L	50L	114L/h	3400*1520*2100	4200
DSJGF-460CC	460/520	575/650	828A	KTAA19-G6	6	159*159	19L	50L	133L/h	3400*1520*2100	4500
DSJGF-460CC	---/520	---/650	828A	KTA19-G8	6	159*159	19L	50L	143L/h	3500*1380*1980	4500
DSJGF-500CC	---/550	---/687.5	900A	KTAA19-G6A	6	159*159	19L	50L	157L/h	3600*1600*2060	4800

DSJGF-500CC	500/560	625/700	900A	KT38-G	12	159*159	38L	135L	142L/h	4300*1700*2350	6500
DSJGF-570CC	570/630	712.5/787.5	1026A	KTA38-G1	12	159*159	38L	135L	162L/h	4300*1700*2350	6600
DSJGF-570CC	570/630	712.5/787.5	1026A	KTA38-G1B	12	159*159	38L	135L	152L/h	4300*1800*2500	7000
DSJGF-580CC	580/640	725/800	1044A	KT38-GA	12	159*159	38L	135L	187L/h	4300*1800*2500	6800
DSJGF-600CC	600/660	750/825	1080A	KTA38-G2	12	159*159	38L	135L	169L/h	4300*1800*2500	7300
DSJGF-640CC	640/710	800/887.5	1152A	KTA38-G2B	12	159*159	38L	135L	169L/h	4300*1800*2350	7300
DSJGF-728CC	728/800	910/1000	1310A	KTA38-G2A	12	159*159	38L	135L	196L/h	4300*1760*2500	7500
DSJGF-800CC	800/880	1000/1100	1440A	KTA38-G5	12	159*159	38L	135L	212L/h	4420*1850*2280	7900
DSJGF-900CC	---/1000	---/1100	1620A	KTA38-G9	12	159*159	38L	135L		4550*1850*2280	8200
DSJGF-1000CC	1000/1100	1250/1375	1800A	KTA50-G3	12	159*159	38L	167.8L	291L/h	5000*2040*2430	9500
DSJGF-1020CC	1020/1100	1275/1375	1836A	KTA50-G12	16	159*159	50L	167.8L	270L/h	5100*2000*2450	10500
DSJGF-1100CC	1100/1320	1375/1650	1980A	KTA50-G8	16	159*159	50L	204L	289L/h	5300*2100*2450	11000
DSJGF-1180CC	1180/1320	1475/1650	2124A	KTA50-GS8	16	159*159	50L	204L	313L/h	5600*2150*2600	11500
DSJGF-1340CC	1340/1500	1675/1875	2412A	KTA50-G15X	16	159*159	50L	204L	346L/h	5700*2280*2600	12000
DSJGF-1600CC	1600/1650	2000/2062	2880A	KTA50-G16B	16	159*159	50L	223L	400L/h	5700*2280*2600	12500



CUMMINS CCEC Series diesel generator

(Emission: Stage 3)

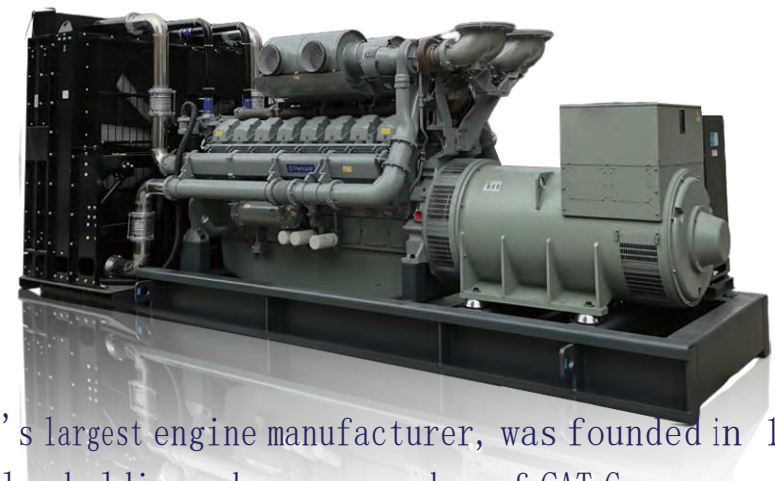


Model	KW	KVA	Current	Engine Mode	CDSJinder	Bore×Stroke	Engine capacity	Lub capacity	Consumption	Size(mm)	Weight(kg)
DSJGF-200CC	200/220	250/275	360A	QSNT-G6	6	140*152	14L	38.6	62L/h	2800*1050*1550	2100
DSJGF-220CC	220/250	275/312.5	396A	QSNT-G7	6	140*152	14L	38.6L	67L/h	3000*1050*1650	2480
DSJGF-250CC	250/280	312.5/350	450A	QSNT-G1	6	140*152	14L	38.6L	75L/h	3100*1150*1680	2500
DSJGF-280CC	280/310	350/387.5	504A	QSNT-G2	6	140*152	14L	38.6L	80L/h	3100*1150*1680	2500
DSJGF-320CC	320/350	400/437.5	576A	QSNT-G3	6	140*152	14L	38.6L	87L/h	2870*1150*1550	2300
DSJGF-360CC	360/400	450/500	648A	QSNT-G4X	6	140*152	14L	38.6L	99L/h	3100*1150*1700	2800
DSJGF-360CC	360/400	450/500	648A	QSK19-G14	6	159*159	19L	50L	99.7L/h	3050*1150*1700	2800
DSJGF-400CC	400/450	500/562.5	720A	QSK19-G13	6	159*159	19L	50L	109.5L/h	3050*1150*1700	2900
DSJGF-460CC	460/520	575/650	828A	QSK19-G12	6	159*159	19L	50L	128.3L/h	3150*1040*1900	3000
DSJGF-470CC	470/517	587.5/646	846A	QSK19-G6	6	159*159	19L	50L	129.6L/h	3200*1050*1900	3100
DSJGF-520CC	520/570	650/712.5	936A	QSK19-G4	6	159*159	19L	50L	145L/h	3300*1250*1900	3100
DSJGF-550CC	550/600	687.5/750	990A	QSK19-G11	6	159*159	19L	50L	153.8L/h	3500*1300*1950	3300
DSJGF-364CC	364/400	455/500	655A	QSK19-G15	6	159*159	19L	50L	--	3500*1300*1950	3600
DSJGF-400CC	400/450	500/562.5	720A	QSK19-G16	6	159*159	19L	50L	--	3500*1380*1980	3600
DSJGF-455CC	455/500	569/625	819A	QSK19-G17	6	159*159	19L	50L	--	3500*1380*1980	4000
DSJGF-509CC	509/560	636/700	916A	QSK19-G18	6	159*159	19L	50L	--	3400*1520*2100	4200
DSJGF-545CC	545/600	684/750	981A	QSK19-G19	6	159*159	19L	50L	--	3400*1520*2100	4500
DSJGF-600CC	600/660	750/825	1080A	QSK19-G20	6	159*159	19L	50L	--	3500*1380*1980	4500
DSJGF-655CC	655/720	819/990	1179A	QSK19-G21	6	159*159	19L	50L	--	3600*1600*2060	4800
DSJGF-600CC	600/660	750/825	1080A	QSK38-G8	12	159*159	38L	135L	168L/h	4300*1700*2350	6500
DSJGF-650CC	650/710	812.5/887.5	1170A	QSK38-G7	12	159*159	38L	135L	180L/h	4300*1700*2350	6600
DSJGF-728CC	728/800	910/1000	1310A	QSK38-G6	12	159*159	38L	135L	197L/h	4300*1800*2500	7000
DSJGF-806CC	806/887	1007/1109	1451A	QSK38-G1	12	159*159	38L	135L	212L/h	4300*1800*2500	6800
DSJGF-915CC	915/1007	1144/1259	1647A	QSK38-G2	12	159*159	38L	135L	235L/h	4300*1800*2500	7300
DSJGF-1000CC	1000/1100	1250/1375	1800A	QSK38-G5	12	159*159	38L	135L	271L/h	4300*1800*2350	7300
DSJGF-1080CC	1080/1200	1350/1500	1944A	QSK38-G19	12	159*159	38L	135L	288L/h	4300*1760*2500	7500

DSJGF-727CC	727/800	909/1000	1309A	QSK38-G9	12	159*159	38L	135L	--	4420*1850*2280	7900
DSJGF-800CC	800/880	1000/1100	1440A	QSK38-G10	12	159*159	38L	135L	--	4550*1850*2280	8200
DSJGF-909CC	909/1000	1136/1250	1636A	QSK38-G11	12	159*159	38L	135L	--	5000*2040*2430	9500
DSJGF-1018CC	1018/1120	1272/1400	1832A	QSK38-G12	12	159*159	38L	135L	--	5100*2000*2450	10500
DSJGF-1120CC	1120/1230	1400/1537	2016A	QSK38-G13	12	159*159	38L	135L	--	5300*2100*2450	11000
DSJGF-1218CC	1218/1340	1522/1675	2192A	QSK38-G14	12	159*159	38L	135L	--	5600*2150*2600	11500
DSJGF-1280CC	1280/1408	1600/1760	2304A	QSK38-G15	12	159*159	38L	135L	--	5700*2280*2600	12000



PERKINS Series



British Perkins (also called Rolls-Royce) engine Co., LTD is one of the world's largest engine manufacturer, was founded in 1932, the annual output nearly 400,000 engines. In 1998, Perkins was the us Chrysler holdings, become a member of CAT Group. Perkins company late to enter the Chinese market, but since 1995, it has been accepted by customers at a rapid rate and has quickly occupied some market share, has made remarkable achievements in the generator set market.

Perkins diesel generator set has a full range of specifications, many varieties, compact structure, stable and reliable performance, easy general maintenance, low exhaust emission pollution, and meets Euro III environmental protection emission standards.

Standard configuration

✓ Diesel engine	✓ Alternator	✓ 40°C water cooled radiator	✓ Intelligent controller
✓ Steel base	✓ out switch	✓ Silencer and flexible exhaust hose	✓ maintenance-free battery

Optional configuration

e Soundproof case	e ATS	e 50°C water cooled radiator	e Water heater
e Oil heater	e Trailer	e Automatic parallel synchronizing control system	



PERKINS Series diesel generator



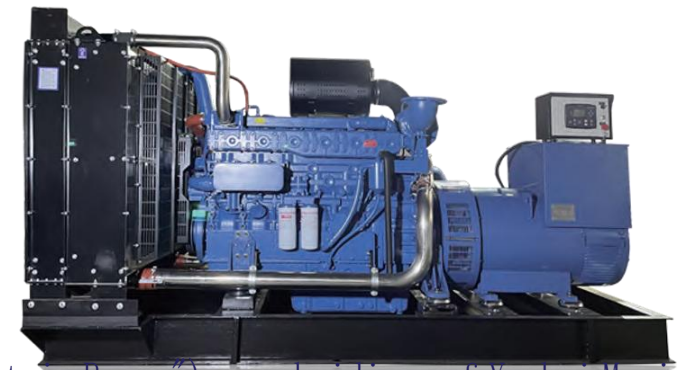
Model	KW	KVA	Current	Engine Mode	CDSJinder	Bore×Stroke	Engine capacity	Lub capacity	Consumption	Size(mm)	Weight(kg)
DSJGF-10PK	10.4/11.6	13/14.5	18A	403A-15G1	3	84*90	1.496L	6L	3.7L/h	1250*700*1100	400
DSJGF-12PK	11.8/12.9	15/16.25	21A	403A-15G2	3	84*90	1.496L	6L	5L/h	1250*700*1100	400
DSJGF-16PK	16/17.7	20/22	28.8A	404A-22G1	4	84*100	2.216L	10.6L	5.3L/h	1300*700*1100	500
DSJGF-10PK	10.4/11.6	13/14.5	18A	403D-15G	3	84*90	1.496L	6L	3.6L/h	1250*700*1100	400
DSJGF-16PK	16/17.7	20/22	28.8A	404D-22G	4	84*100	2.216L	10.6L	5.3L/h	1350*710*1100	500
DSJGF-22PK	22/24	27.5/30	40A	404D-22TG	4	84*100	2.216L	10.6L	7.1L/h	1350*710*1100	600
DSJGF-52PK	52/57	65/71	93.6A	1104A-44TG1	4	105*127	4.41L	8L	14.8L/h	2100*870*1350	1050
DSJGF-64PK	64/70	80/87.5	115.2A	1104A-44TG2	4	105*127	4.41L	8L	18.7L/h	2100*870*1350	1100
DSJGF-81PK	81/90	101/112.5	146A	1104C-44TAG2	4	105*127	4.41L	8L	22.6L/h	2100*870*1350	1200
DSJGF-108PK	108/120	135/150	194.4A	1106A-70TG1	6	105*135	7.0L	18L	30.2L/h	2500*1000*1520	1550
DSJGF-120PK	120/132	150/165	216A	1106A-70TAG2	6	105*135	7.0L	18L	33.4L/h	2500*1000*1520	1650
DSJGF-144PK	144/160	180/200	259A	1106A-70TAG3	6	105*135	7.0L	18L	41.6L/h	2500*1000*1520	1750
DSJGF-160PK	160/176	200/220	288A	1106A-70TAG4	6	105*135	7.0L	18L	45.8L/h	2500*1000*1520	1880
DSJGF-24PK	24/26	30/33	43.2A	1103A-33G	3	105*127	3.3L	8.3L	7.2L/h	1850*750*1250	720
DSJGF-36PK	36/40	45/50	64.8A	1103A-33TG1	3	105*127	3.3L	8.3L	10.8L/h	1850*750*1250	850
DSJGF-48PK	48/53	60/66	86.4A	1103A-33TG2	3	105*127	3.3L	8.3L	14.6L/h	1850*750*1250	990
DSJGF-160PK	160/176	200/220	288A	1206A-E70TTAG1	6	105*135	7.0L	16L	45.8L/h	2500*1000*1520	2000
DSJGF-184PK	184/200	230/250	331A	1206A-E70TTAG2	6	105*135	7.0L	16L	51L/h	2900*1050*1800	2200
DSJGF-200PK	200/220	250/275	360A	1206A-E70TTAG3	6	105*135	7.0L	16L	57L/h	2900*1050*1800	2300
DSJGF-206PK	206/226	257.5/282.5	371A	1506A-E88TAG3	6	112*149	8.8L	41L	56L/h	3100*1000*1700	2700

DSJGF-246PK	246/270	307.5/337.5	443A	1506A-E88TAG5	6	112*149	8.8L	41L	65L/h	3100*1000*1700	3000
DSJGF-245PK	245/271	306/339	441A	1706A-E93TAG1	6	115*149	9.29L	30L	62L/h	3100*1000*1700	3000
DSJGF-278PK	278/306	347.5/382.5	500A	1706A-E93TAG2	6	115*149	9.29L	30L	70L/h	3100*1000*1700	3150
DSJGF-280PK	280/320	350/400	504A	2206C-E13TAG2	6	130*157	12.5L	40L	75L/h	3200*1180*2000	3450
DSJGF-320PK	320/360	400/450	576A	2206C-E13TAG3	6	130*157	12.5L	40L	85L/h	3200*1180*2000	3600
DSJGF-364PK	364/400	455/500	441A	2506C-E15TAG1	6	137*171	15.2L	62L	99L/h	3250*1310*1940	3900
DSJGF-400PK	400/440	500/550	720A	2506C-E15TAG2	6	137*171	15.2L	62L	106L/h	3250*1310*1940	4000

Model	KW	KVA	Current	Engine Mode	CDSJinder	Bore×Stroke	Engine capacity	Lub capacity	Consumption	Size(mm)	Weight(kg)
DSJGF-473PK	473/520	591/650	851A	2806C-E18TAG1A	6	145*183	18.1L	62L	129L/h	3360*1535*2040	4400
DSJGF-520PK	520/560	650/700	936A	2806A-E18TAG2	6	145*183	18.1L	62L	132L/h	3360*1535*2040	4600
DSJGF-597PK	597/656	746/820	1074A	4006-23TAG2A	6	160*190	22.9L	113.4L	157L/h	4280*1710*2365	5600
DSJGF-641PK	641/718	801/897.5	1154A	4006-23TAG3A	6	160*190	22.9L	113.4L	172L/h	4280*1710*2365	5800
DSJGF-818PK	818/900	1022.5/1125	1472A	4008TAG2A	8	160*190	30.6L	153L	215L/h	4800*2046*2320	7700
DSJGF-900PK	900/1000	1125/1250	1620A	4008-30TAG3	8	160*190	30.6L	153L	244L/h	4800*2046*2320	7900
DSJGF-1000PK	1000/1100	1250/1375	1800A	4012-46TWG2A	12	160*190	45.8L	177L	259L/h	4850*1970*2410	9800
DSJGF-1200PK	1200/1320	1500/1650	2160A	4012-46TAG2A	12	160*190	45.8L	177L	310L/h	4985*2192*2480	10600
DSJGF-1350PK	1350/1500	1687.5/1875	2430A	4012-46TAG3A	12	160*190	45.8L	177L	370L/h	5040*2164*2545	10800
DSJGF-1480PK	1480/1600	1850/2000	2664A	4016TAG1A	16	160*190	61.1L	237L	387L/h	6000*2135*2575	12500
DSJGF-1600PK	1600/1800	2000/2250	2880A	4016TAG2A	16	160*190	61.1L	237L	431L/h	6070*2135*2575	14000
DSJGF-1800PK	1800/2000	2250/2500	3240A	4016-61TRG3	16	160*190	61.1L	237L	470L/h	6280*2250*2725	15000



YUCHAI Series



Guangxi Yuchai Marine Electric Power Co., LTD. (referred to as "Yuchai Marine Electric Power"), a subsidiary of Yuchai Marine Electric Power Co., LTD., originally belonging to Yuchai Marine Electric Power Division, began to operate fully and independently in January 2022. Established long-term cooperative partners with Huawei, China Mobile, China Telecom, Sinopec, petrochina and other companies. The company's comprehensive annual sales revenue exceeded 4 billion yuan, and the annual production capacity of engines reached 100,000 units.

The company has ranked the first national enterprise technology center, as well as domestic first-class R & D center and application laboratory, postdoctoral research workstation and academician expert workstation. Products include diesel engine, gas engine, and cDSJ-inder block and other related parts, product power covers 2.8kW-4200kW, covering VC, VTD, TF and other 14 platforms 49 series, with high power, high torque, high reliability, low energy consumption, low noise, low emissions, strong adaptation and other characteristics. The power density, fuel consumption rate and emission index of the products are at the leading level in the same industry.

Standard configuration

✓ Diesel engine	✓ Alternator	✓ 40°C water cooled radiator	✓ Intelligent controller
✓ Steel base	✓ out switch	✓ Silencer and flexible exhaust hose	✓ maintenance-free battery

Optional configuration

e Soundproof case	e ATS	e 50°C water cooled radiator	e Water heater
e Oil heater	e Trailer	e Automatic parallel synchronizing control system	



上柴动力
SDEC POWER

SDEC Series



Shanghai New Power Automotive Technology Co., Ltd. (previously known as Shanghai Diesel Engine Co., Ltd., Shanghai Diesel Engine Factory, Shanghai Wusong Machine Factory etc.), was founded in 1947 and is now affiliated with SAIC Motor Corporation Limited (SAIC Motor). In 1993, it was restructured into a state-owned holding company that issues A and B shares on the Shanghai Stock Exchange.

SDEC Series diesel generator set is adopted the H, D, E, G, W series diesel engine made by Shanghai Diesel Engine Co. Ltd, equipped with the famous brand generator. The diesel gensets feature high voltage regulation accuracy, good dynamic performance, small voltage wave distortion, high efficiency, reliable operation, long service life, and good fuel economy. With a maintenance-free battery starting system, the diesel gensets can be started just by filling oil and coolant, connecting the battery negative switch, which greatly improve the convenience of usage.

Standard configuration

✓ Diesel engine	✓ Alternator	✓ 40°C water cooled radiator	✓ Intelligent controller
✓ Steel base	✓ out switch	✓ Silencer and flexible exhaust hose	✓ maintenance-free battery

Optional configuration

e Soundproof case	e ATS	e 50°C water cooled radiator	e Water heater
e Oil heater	e Trailer	e Automatic parallel synchronizing control system	



YUCHAI Series diesel generator

(Emission: Stage 2)



Model	KW	KVA	Current	Engine Mode	CDSJindex	Bore×Stroke	Engine capacity	Lub capacity	Consumption	Size(mm)	Weight(kg)
DSJGF-16YC	16/18	20/22	28.8A	YC4V35-D20	4	89*100	2.5L	6.5L	6.5L/h	1500*750*1050	480
DSJGF-24YC	24/26	30/32	43.2A	YC4V45-D20	4	89*100	2.5L	6.5L	8.1L/h	1500*750*1050	500
DSJGF-30YC	30/32	37.5/40	54A	YC4V55-D20	4	89*100	2.5L	6.5L	10.2L/h	1500*750*1050	530
DSJGF-30YC	30/33	37.5/41	54A	YC4D60-D25	4	102*118	3.86L	10L	10.5L/h	1800*750*1200	700
DSJGF-50YC	50/55	62.5/69	90A	YC4D90Z-D25	4	110*125	4.75L	11.5L	15.3L/h	1870*800*1200	900
DSJGF-60YC	60/66	75/82.5	108A	YC4A100Z-D25	4	110*125	4.75L	11.5L	17.9L/h	2250*800*1300	950
DSJGF-80YC	80/90	100/112.5	144A	YC4A140L-D25	4	110*125	4.75L	11.5L	24.6L/h	2300*800*1300	1050
DSJGF-90YC	90/100	112.5/125	162A	YC4A180L-D20	4	108*132	4.84L	17L	29.9L/h	2250*950*1300	1100
DSJGF-100YC	100/120	125/150	180A	YC6B180L-D20	6	108*125	6.87L	17L	28.5L/h	2350*950*1420	1300
DSJGF-120YC	120/130	150/162.5	216A	YC6B205L-D20	6	108*125	6.87L	17L	34.9L/h	2500*850*1300	1500
DSJGF-150YC	150/160	187.5/200	270A	YC6A245L-D21	6	108*132	7.26L	22L	43.3L/h	2550*950*1550	1650
DSJGF-200YC	200/220	250/275	360A	YC6MK350L-D20	6	123*145	10.34L	30L	57.2L/h	2930*1120*1600	2080
DSJGF-250YC	250/280	312.5/350	450A	YC6MK420L-D20	6	123*145	10.34L	30L	68.6L/h	3000*1150*1700	2380
DSJGF-290YC	290/320	362.5/400	522A	YC6MJ480L-D20	6	131*145	11.73L	30L	79.2L/h	3050*1150*1700	2550
DSJGF-300YC	300/330	375/412.5	540A	YC6MJ500L-D21	6	131*145	11.73L	37L	80.7L/h	3300*1250*1800	2800

DSJGF-360YC	360/400	450/500	648A	YC6T600L-D22	6	145*165	16.35L	52L	98.2L/h	3500*1280*1800	4000
DSJGF-400YC	400/440	500/550	720A	YC6T660L-D20	6	145*165	16.35L	52L	108.3L/h	3500*1280*1800	4100

Model	KW	KVA	Current	Engine Mode	CDSJinder	Bore×Stroke	Engine capacity	Lub capacity	Consumption	Size(mm)	Weight(kg)
DSJGF-400YC	400/440	500/550	720A	YC6K660-D30	6	129*165	12.9L	35L	103.0L/h	3200*1230*1570 mm	3000
DSJGF-400YC	400/440	500/550	720A	YC6T660-D31	6	145*165	16.3L	52L	113.8L/h	3350*1350*1850 mm	4000
DSJGF-450YC	450/500	562.5/625	810A	YC6TD780-D31	6	152*180	19.6L	55L	137.0L/h	3360*1560*1880 mm	4200
DSJGF-500YC	500/550	625/687.5	900A	YC6TD840-D31	6	152*180	19.6L	55L	144.4L/h	3430*1560*1880 mm	4250
DSJGF-550YC	550/600	687.5/750	990A	YC6TD900-D31	6	152*180	19.6L	55L	154.3L/h	3520*1560*1880 mm	4350
DSJGF-600YC	600/650	750/812.5	1080A	YC6TD1000-D30	6	152*180	19.6L	52L	166.6L/h	3700*1820*1940 mm	4500
DSJGF-700YC	700/770	875/962.5	1260A	YC6TD1100-D30	6	152*180	19.6L	56L	206.8L/h	3700*1820*1940 mm	4700
DSJGF-600YC	600/650	750/812.5	1080A	YC6C1020-D31	6	200*210	39.58L	180L	172.5L/h	4100*2000*2140 mm	6200
DSJGF-650YC	650/710	812.5/887.5	1170A	YC6C1070-D31	6	200*210	39.58L	180L	172.5L/h	4100*2000*2140 mm	6500
DSJGF-650YC	650/710	812.5/887.5	1170A	YC6TH1070-D31	6	175*195	28.14L	95L	177.3L/h	4100*2000*2140 mm	6500
DSJGF-730YC	730/800	912.5/1000	1314A	YC6TH1220-D31	6	175*195	28.14L	95L	201.2L/h	4100*2000*2140 mm	6500
DSJGF-730YC	730/800	912.5/1000	1314A	YC6C1220-D31	6	200*210	39.58L	180L	203.7L/h	4100*2000*2140 mm	6500
DSJGF-800YC	800/880	1000/1100	1440A	YC6TH1320-D31	6	175*195	28.14L	95L	218.4L/h	4100*2000*2140 mm	6700
DSJGF-800YC	800/880	1000/1100	1440A	YC6C1320-D31	6	200*210	39.58L	180L	220.2L/h	4450*2050*2490 mm	6850
DSJGF-1000YC	1000/1100	1250/1375	1800A	YC6C1660-D30	6	200*210	39.58L	160L	276.8L/h	4650*2050*2520 mm	7060
DSJGF-1000YC	1000/1100	1250/1375	1800A	YC6C1660-D31	6	200*210	39.58L	160L	276.8L/h	4650*2050*2520 mm	7060
DSJGF-900YC	900/1000	1125/1250	1620A	YC6C1520-D31	6	200*210	39.58L	160L	253.3L/h	4450*2050*2490 mm	6850
DSJGF-800YC	800/880	1000/1100	1440A	YC12VTD1350-D30	12	152*180	39.2L	210L	229.4L/h	4450*2100*2460 mm	8200
DSJGF-900YC	900/1000	1125/1250	1620A	YC12VTD1500-D30	12	152*180	39.2L	210L	252.5L/h	4450*2100*2460 mm	8500
DSJGF-1000YC	1000/1100	1125/1250	1800A	YC12VTD1680-D30	12	152*180	39.2L	210L	281.9L/h	4450*2100*2460 mm	8700
DSJGF-1100YC	1100/1200	1375/1500	1980A	YC12VTD1830-D30	12	152*180	39.2L	210L	305.7L/h	4450*2100*2460 mm	8900
DSJGF-1200YC	1200/1350	1500/1687	2160A	YC12VTD2000-D30	12	152*180	39.2L	210L	338.6L/h	4450*2100*2460 mm	9200
DSJGF-1200YC	1200/1350	1500/1687	2160A	YC12VC2070-D31	12	200*210	79.17L	310L	339.2L/h	6300*2550*3080 mm	14500
DSJGF-1350YC	1350/1500	1687/1875	2430A	YC12VC2270-D31	12	200*210	79.17L	310L	370.6L/h	6300*2550*3080 mm	15000
DSJGF-1500YC	1500/1600	1875/2000	2700A	YC12VC2510-D31	12	200*210	79.17L	310L	416.5L/h	6300*2550*3080 mm	15500
DSJGF-1700YC	1700/1800	2125/2250	3060A	YC12VC2700-D31	12	200*210	79.17L	310L	441.9L/h	6300*2550*3080 mm	16000
DSJGF-	1800/2000	2250/2500	3240A	YC12VC3000-D30	12	200*210	79.17L	310L	505.9L/h	6300*2550*3080 mm	16500

1800YC											
DSJGF-1350YC	1350/1500	1687/1875	2430A	YC16VTD2270-D30	16	152*180	52.26L	280L	374.4L/h	5200*2200*2630 mm	11500
DSJGF-1500YC	1500/1600	1875/2000	2700A	YC16VTD2510-D30	16	152*180	52.26L	280L	412.5L/h	5200*2200*2630 mm	12000
DSJGF-1600YC	1600/1800	2000/2250	2880A	YC16VTD2700-D30	16	152*180	52.26L	280L	432.5L/h	5200*2200*2630 mm	12500
DSJGF-1800YC	1800/2000	2250/2500	3240A	YC16VC3000-D31	16	200*210	105.56L	430L	493.9L/h	6800*2550*3080 mm	19700
DSJGF-2000YC	2000/2200	2500/2750	3600A	YC16VC3300-D31	16	200*210	105.56L	430L	543.2L/h	6900*2770*3350 mm	20200
DSJGF-2200YC	2200/2400	2750/3000	3960A	YC16VC3600-D31	16	200*210	105.56L	430L	595.3L/h	6900*2770*3350 mm	21000
DSJGF-2400YC	2400/2600	3000/3250	4320A	YC16VC4000-D31	16	200*210	105.56L	430L	673.9L/h	6900*2770*3350 mm	21000



YUCHAI Series diesel generator

(Emission: Stage 3)



Model	KW	KVA	Current	Engine Mode	CDSJinder	Bore×Stroke	Engine capacity	Lub capacity	Consumption	Size(mm)	Weight(kg)
DSJGF-40YC	40/44	50/55	72A	YCD4V33H6-75	4	89*100	2.5L	6.5L	12.1L/h	1850*750*1100	650
DSJGF-40YC	40/44	50/55	72A	YC4D80-D34	4	102*118	3.86L	10L	13.3L/h	1850*750*1100	750
DSJGF-50YC	50/55	62.5/69	90A	YC4D90-D34	4	102*118	3.86L	10L	14.3L/h	1920*800*1200	800
DSJGF-60YC	60/64	75/80	108A	YC4D105-D34	4	110*125	4.75L	11.5L	17.6L/h	2000*850*1200	900
DSJGF-80YC	80/90	100/112.5	144A	YC4D140-D31	4	110*125	4.75L	11.5L	23.7L/h	2200*850*1200	1000
DSJGF-90YC	90/100	112.5/125	162A	YC4D155-D31	4	108*115	4.21L	13L	27.6L/h	2300*900*1500	1030
DSJGF-80YC	80/90	100/112.5	144A	YC4A140-D30	4	108*132	4.84L	17L	25.4L/h	2200*850*1200	1010
DSJGF-90YC	90/100	112.5/125	162A	YC4A155-D30	4	108*132	4.84L	17L	27.1L/h	2300*900*1500	1040
DSJGF-90YC	90/100	112.5/125	108A	YC4A165-D30	4	108*132	4.84L	17L	28.3L/h	2300*900*1500	1040
DSJGF-110YC	110/120	137.5/150	198A	YC4A190-D30	4	108*132	4.84L	17L	31.9L/h	2300*900*1500	1150
DSJGF-120YC	120/132	150/165	216A	YCD6Q23H8-210	6	108*135	7.5L	21L	36.7L/h	2500*950*1600	1300
DSJGF-150YC	150/165	187.5/206	270A	YCD6Q33H6-260	6	108*135	7.5L	21L	45.5L/h	2500*950*1600	1500
DSJGF-120YC	120/132	150/165	216A	YC6A205-D30	6	108*132	7.26L	22L	35.3L/h	2500*950*1600	1325
DSJGF-140YC	140/150	175/187.5	252A	YC6A230-D30	6	108*132	7.26L	22L	39.8L/h	2500*1000*1600	1525
DSJGF-150YC	150/160	187.5/206	270A	YC6A245-D30	6	108*132	7.26L	22L	41.8L/h	2500*1000*1600	1620
DSJGF-160YC	160/180	200/225	200A	YC6A275-D30	6	108*132	7.26L	22L	47.1L/h	2500*1000*1600	1680
DSJGF-200YC	200/220	250/275	360A	YC6MK350-D30	6	123*145	10.34L	30L	57.5L/h	3100*1050*1750	2200
DSJGF-200YC	200/220	250/275	360A	YCA08350-D30	6	110*132	7.53L	22L	59.0L/h	3200*1150*1750	1900
DSJGF-250YC	250/280	312.5/350	450A	YC6MK420-D30	6	123*145	10.34L	30L	68.3L/h	3200*1150*1750	2400
DSJGF-280YC	280/300	350/375	504A	YC6MK450-D30	6	123*145	10.34L	30L	72.6L/h	3200*1150*1750	2600

DSJGF-300YC	300/330	375/412.5	540A	YC6MJ500-D30	6	131*145	11.73L	37L	82.0L/h	3100*1100*1900	2800
DSJGF-330YC	330/360	412.5/450	594A	YC6MJ540-D30	6	131*145	11.73L	37L	87.9L/h	3100*1100*1900	3000
DSJGF-350YC	350/400	437.5/500	630A	YC6MJ600-D30	6	131*145	11.73L	37L	97.3L/h	3100*1100*1900	3200
DSJGF-300YC	300/330	375/412.5	540A	YC6K500-D31	6	129*155	12.16L	32L	80.9L/h	3300*1250*1850	2980
DSJGF-300YC	300/330	375/412.5	540A	YC6K500-D30	6	129*155	12.16L	32L	80.9L/h	3300*1250*1850	2980
DSJGF-320YC	320/350	400/437.5	576A	YC6K520-D30	6	129*155	12.16L	32L	86.0L/h	3300*1250*1850	3150
DSJGF-350YC	350/400	437.5/500	630A	YC6K600-D30	6	129*155	12.16L	35L	103.2L/h	3400*1250*1850	3300



上柴动力
SDEC POWER

SDEC Series diesel generator

(Emission: Stage 2)



Model	KW	KVA	Current	Engine Mode	CDSJinder	Bore×Stroke	Engine capacity	Lub capacity	Consumption	Size(mm)	Weight(kg)
DSJGF-12SC	12/13.2	15/16.5	21.6A	4Z2.3-G21	4	85*100	2.3L	10L	4.92L/h	1600*650*1100	460
DSJGF-16SC	16/18	20/22.5	28.8A	4Z2.7-G21	4	90*105	2.7L	10L	4.92L/h	1600*650*1100	470
DSJGF-20SC	20/22	25/27.5	36A	4Z3.0-G21	4	95*105	3.0L	10L	6.13L/h	1600*650*1100	480
DSJGF-25SC	25/27.5	31.2/34	45A	4Z3.2-G21	4	98*105	3.2L	10L	7.11L/h	1600*650*1100	500
DSJGF-32SC	32/35	40/43.75	57.6A	4ZT3.2-G21	4	98*105	3.2L	10L	8.34L/h	1700*650*1150	600
DSJGF-40SC	40/44	50/55	72A	4ZT3.5-G21	4	105*115	3.5L	10L	10.23L/h	1700*650*1150	660
DSJGF-50SC	50/55	62.5/68.75	90A	4ZT4.1-G21	4	105*118	4.1L	10L	12.82L/h	1700*650*1150	700
DSJGF-55SC	55/60	68.75/75	99A	4ZTAA4.1-G21	4	105*118	4.1L	10L	13.45L/h	1700*650*1150	730
DSJGF-64SC	64/72	80/90	115.2A	4ZTAA4.1-G31	4	105*118	4.1L	7.5L	20.5L/h	1700*650*1150	750
DSJGF-50SC	50/55	62.5/68.75	90A	SC4H95D2	4	105*124	4.3L	13L	14.8L/h	1900*893*1170	940
DSJGF-64SC	64/72	80/90	115.2A	SC4H115D2	4	105*124	4.3L	13L	18.6L/h	1950*893*1170	1020
DSJGF-80SC	80/90	100/112.5	144A	SC4H140D2	4	105*124	4.3L	13L	22.8L/h	1983*973*1185	1100
DSJGF-90SC	90/100	112.5/125	162A	SC4H160D2	4	105*124	4.3L	13L	24.6L/h	1983*973*1185	1100
DSJGF-100SC	100/110	125/137.5	180A	SC4H180D2	4	105*124	4.3L	13L	28.1L/h	1983*973*1185	1123
DSJGF-100SC	100/110	125/137.5	180A	SC7H180D2	6	105*124	6.5L	18L	30.0L/h	2413*940*1376	1300
DSJGF-120SC	120/132	150/165	216A	SC7H205D2	6	105*124	6.5L	18L	34.4L/h	2413*940*1376	1412
DSJGF-130SC	130/145	162.5/181	234A	SC7H220D2	6	105*124	6.5L	18L	35.6L/h	2413*940*1376	1412
DSJGF-135SC	135/150	168.7/187.5	243A	SC7H230D2	6	105*124	6.5L	18L	36.3L/h	2413*940*1376	1412
DSJGF-150SC	150/165	187.5/206	270A	SC7H250D2	6	105*124	6.5L	18L	39.7L/h	2413*940*1376	1437
DSJGF-160SC	160/180	200/225	288A	SC8D280D2	6	114*135	8.3L	19L	44.9L/h	2490*1080*1630	1770
DSJGF-180SC	180/200	225/250	324A	SC9D310D2	6	114*144	8.9L	19L	50.4L/h	2505*980*1500	1670
DSJGF-200SC	200/220	250/275	360A	SC9D340D2	6	114*144	8.9L	25L	53.6L/h	2540*1000*1486	1835
DSJGF-220SC	220/250	275/312.5	396A	SC10E380D2	6	128*135	10.4L	36L	60.9L/h	3065*1105*1626	1526
DSJGF-250SC	250/280	312.5/350	450A	SC12E420D2	6	128*135	11.8L	36L	72.9L/h	3065*1105*1626	1640
DSJGF-280SC	280/300	350/375	504A	SC12E460D2	6	128*135	11.8L	36L	75L/h	3065*1105*1626	1640
DSJGF-290SC	290/320	362.5/400	522A	SC12E480D2	6	128*135	11.8L	36L	77.3L/h	3065*1105*1626	1640

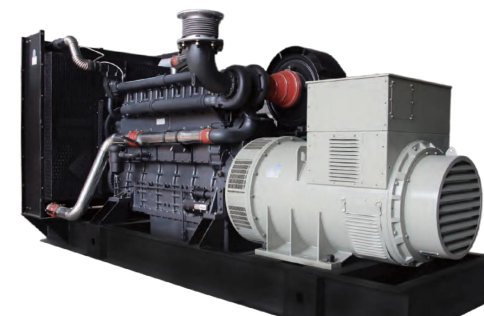
DSJGF-300SC	300/330	375/412.5	540A	SC13E500D2	6	130*161	12.8L	36L	81.2L/h	3065*1105*1626	1640
DSJGF-320SC	320/360	400/450	576A	SC13E550D2	6	130*161	12.8L	36L	85.6L/h	3065*1105*1626	1640
DSJGF-250SC	250/280	312.5/350	450A	SC13G420D2	6	135*150	12.8L	41L	62.9L/h	3080*1230*1670	2760
DSJGF-300SC	300/330	375/412.5	540A	SC15G500D2	6	135*165	14.2L	41L	79.8L/h	3147*1230*1670	2970
DSJGF-360SC	360/400	450/500	648A	SC25G610D2	12	135*150	25.8L	65L	98.0L/h	3449*1400*1992	4195
DSJGF-400SC	400/440	500/550	720A	SC25G690D2	12	135*150	25.8L	65L	111L/h	3548*1400*1992	4300
DSJGF-450SC	450/500	562.5/625	810A	SC27G755D2	12	135*155	26.6L	65L	122.2L/h	3548*1400*1992	4370
DSJGF-500SC	500/550	625/687.5	900A	SC27G830D2	12	135*155	26.6L	65L	134.3L/h	3548*1400*1992	4510
DSJGF-550SC	550/600	687.5/750	990A	SC27G900D2	12	135*155	26.6L	65L	145.6L/h	3548*1400*1992	4605
DSJGF-600SC	600/660	750/825	1080A	SC33W990D2	6	180*215	32.8L	75L	157.3L/h	3548*1400*1992	6400
DSJGF-700SC	700/780	875/975	1260A	SC33W1150D2	6	180*215	32.8L	75L	186.4L/h	3548*1400*1992	6400



上柴动力
SDEC POWER

SDEC Series diesel generator

(Emission: Stage 3)



Model	KW	KVA	Current	Engine Mode	CDSJinder	Bore×Stroke	Engine capacity	Lub capacity	Consumption	Size(mm)	Weight(kg)
DSJGF-8SC	8/8.8	10/11	14.4A	3Z1.1-G42	3	78*78.4	1.1L	4.5L	3.0L/h	1350*600*1100	400
DSJGF-10SC	10/11	12.5/13.75	18A	3ZT1.1-G42	3	78*78.4	1.1L	4.5L	3.3L/h	1350*600*1100	420
DSJGF-12SC	12/13.5	15/16.87	21.6A	4Z2.9-G43	4	93*105	2.9L	7L	4.4L/h	1600*650*1100	450
DSJGF-16SC	16/18	20/22.5	28.8A	4Z2.9-G42	4	93*105	2.9L	7L	5.9L/h	1600*650*1100	460
DSJGF-20SC	20/22	25/27.5	36A	4Z2.9-G41	4	93*105	2.9L	7L	7.3L/h	1600*650*1100	480
DSJGF-12SC	12/13.2	15/16.5	21.6A	4Z2.9-G430	4	93*105	2.9L	7L	4.4L/h	1600*650*1100	450
DSJGF-16SC	16/18	20/22.5	28.8A	4Z2.9-G420	4	93*105	2.9L	7L	5.9L/h	1600*650*1100	460
DSJGF-20SC	20/22	25/27.5	36A	4Z2.9-G410	4	93*105	2.9L	7L	7.3L/h	1600*650*1100	480
DSJGF-25SC	25/27.5	31.25/34.37	45A	4Z3.2-G42	4	98*105	3.2L	7L	8.3L/h	1600*650*1100	500
DSJGF-30SC	30/33	37.5/41.25	54A	4Z3.2-G41	4	98*105	3.2L	7L	9.4L/h	1600*650*1100	520
DSJGF-32SC	32/36	40/45	57.6A	4ZTAA3.2-G33	4	98*105	3.2L	7L	10.1L/h	1700*650*1150	550
DSJGF-40SC	40/44	50/55	72A	4ZTAA3.2-G32	4	98*105	3.2L	7L	12.3L/h	1700*650*1150	600
DSJGF-50SC	50/55	62.5/68.75	90A	4ZTAA3.2-G34	4	98*105	3.2L	7L	15.1L/h	1700*650*1150	630
DSJGF-55SC	55/60	68.75/75	99A	4ZTAA3.2-G31	4	98*105	3.2L	7L	16.2L/h	1700*650*1150	650
DSJGF-64SC	64/72	80/90	115.2A	4ZTAA3.5-G31	4	98*115	3.5L	7L	19.1L/h	1700*650*1150	700
DSJGF-20SC	20/22	25/27.5	36A	4RTAA2.8-G39	4	94*100	2.8L	6.7L	6.7L/h	1850*870*1174	650
DSJGF-30SC	30/33	37.5/41.25	54A	4RTAA2.8-G31	4	94*100	2.8L	6.7L	9.4L/h	1850*870*1174	650
DSJGF-40SC	40/44	50/55	72A	4RTAA2.8-G32	4	94*100	2.8L	6.7L	12.4L/h	1850*870*1174	750
DSJGF-50SC	50/55	62.5/68.75	90A	4RTAA2.8-G37	4	94*100	2.8L	6.7L	13.9L/h	1850*870*1174	750
DSJGF-40SC	40/44	50/55	72A	4HTAA4.3-G31	4	105*124	4.3L	13L	13.2L/h	1848*893*1196	950
DSJGF-50SC	50/55	62.5/68.75	90A	4HTAA4.3-G32	4	105*124	4.3L	13L	14.9L/h	1938*893*1196	972
DSJGF-64SC	64/70	80/87.5	115.2A	4HTAA4.3-G33	4	105*124	4.3L	13L	18.9L/h	1938*893*1196	1032
DSJGF-80SC	80/90	100/112.5	144A	4HTAA4.3-G34	4	105*124	4.3L	13L	22.6L/h	1938*893*1196	1087
DSJGF-90SC	90/100	112.5/125	162A	4HTAA4.3-G35	4	105*124	4.3L	13L	25.3L/h	1938*893*1196	1107
DSJGF-110SC	110/120	137.5/150	198A	4HTAA4.3-G36	4	105*124	4.3L	13L	29.2L/h	1938*893*1196	1132
DSJGF-110SC	110/120	137.5/150	198A	6HTAA6.5-G31	6	105*124	6.5L	17.5L	29.6L/h	1938*893*1196	1132
DSJGF-120SC	120/132	150/165	216A	6HTAA6.5-G32	6	105*124	6.5L	17.5L	32.3L/h	2312*943*1375	1352
DSJGF-135SC	135/150	169/187.5	243A	6HTAA6.5-G35	6	105*124	6.5L	17.5L	35.9L/h	2312*943*1375	1352

Model	KW	KVA	Current	Engine Mode	CDSJinder	Bore×Stroke	Engine capacity	Lub capacity	Consumption	Size(mm)	Weight(kg)
DSJGF-150SC	150/160	187.5/200	270A	6HTAA6.5-G33	6	105*124	6.5L	17.5L	38.9L/h	2312*943*1375	1407
DSJGF-160SC	160/180	200/225	288A	6HTAA6.5-G34	6	105*124	6.5L	17.5L	43.2L/h	2363*943*1375	1440
DSJGF-160SC	160/180	200/225	288A	6DTAA8.9-G31	6	114*144	8.9L	25L	43.1L/h	2550*991*1382	1830
DSJGF-180SC	180/200	225/250	324A	6DTAA8.9-G32	6	114*144	8.9L	25L	48.9L/h	2550*991*1382	1830
DSJGF-200SC	200/220	250/275	360A	6DTAA8.9-G33	6	114*144	8.9L	25L	53.6L/h	2550*991*1468	1905
DSJGF-220SC	220/250	275/312.5	396A	6DTAA8.9-G34	6	114*144	8.9L	25L	59.4L/h	2550*991*1468	1905
DSJGF-250SC	250/280	312.5/350	450A	6ETAA11.8-G32	6	128*153	11.8L	36L	66.9L/h	3100*1105*1626	2370
DSJGF-280SC	280/300	350/540	504A	6ETAA11.8-G33	6	128*153	11.8L	36L	73.3L/h	3100*1105*1626	2480
DSJGF-300SC	300/320	540/400	540A	6ETAA11.8-G31	6	128*153	11.8L	36L	81.2L/h	3100*1105*1626	2550
DSJGF-320SC	320/360	400/450	576A	6ETAA12.8-G32	6	130*161	12.8L	36L	95.8L/h	3100*1105*1626	2700
DSJGF-360SC	360/400	450/500	648A	6ETAA12.8-G31	6	130*161	12.8L	36L	95.8L/h	3300*1105*1626	2700
DSJGF-400SC	400/440	500/550	720A	6ETAA12.8-G310	6	130*161	12.8L	36L	107.5L/h	3400*1105*1626	2800
DSJGF-400SC	400/450	500/562.5	720A	12GTAA27-G34	12	135*155	26.6L	65L	109.2L/h	3548*1400*1992	4300
DSJGF-450SC	450/500	562.5/625	810A	12GTAA27-G33	12	135*155	26.6L	65L	120.3L/h	3548*1400*1992	4370
DSJGF-500SC	500/550	625/687.5	900A	12GTAA27-G32	12	135*155	26.6L	65L	132.5L/h	3548*1400*1992	4510
DSJGF-560SC	560/600	700/750	1008A	12GTAA27-G31	12	135*155	26.6L	65L	148.6L/h	3624*1400*1992	4605
DSJGF-400SC	400/450	500/562.5	720A	6KTAA25-G311	6	170*185	25.2L	75L	109.0L/h	3900*1608*2109	4770
DSJGF-450SC	450/500	562.5/625	810A	6KTAA25-G310	6	170*185	25.2L	75L	122.0L/h	3900*1608*2109	4970
DSJGF-500SC	500/550	625/687.5	900A	6KTAA25-G39	6	170*185	25.2L	75L	133.5L/h	3900*1608*2109	5060
DSJGF-560SC	560/600	700/750	1008A	6KTAA25-G38	6	170*185	25.2L	75L	143.1L/h	3900*1608*2109	5260
DSJGF-600SC	600/660	750/825	1080A	6KTAA25-G37	6	170*185	25.2L	75L	154.5L/h	3900*1608*2109	5500
DSJGF-400SC	400/450	500/562.5	720A	6KTAA25-G36	6	170*185	25.2L	75L	108.2L/h	3900*1608*2109	4770
DSJGF-450SC	450/500	562.5/625	810A	6KTAA25-G35	6	170*185	25.2L	75L	121.3L/h	3900*1608*2109	5060
DSJGF-500SC	500/550	625/687.5	900A	6KTAA25-G34	6	170*185	25.2L	75L	133.7L/h	3900*1608*2109	5260
DSJGF-560SC	560/600	700/750	1008A	6KTAA25-G33	6	170*185	25.2L	75L	145.8L/h	3900*1608*2109	5260
DSJGF-600SC	600/660	750/825	1080A	6KTAA25-G32	6	170*185	25.2L	75L	161.5L/h	3900*1608*2109	5260
DSJGF-660SC	660/720	825/900	1188A	6KTAA25-G31	6	170*185	25.2L	75L	172.5L/h	4191*1608*2109	5400
DSJGF-720SC	720/800	900/1000	1296A	6KTAA25-G320	6	170*185	25.2L	75L	197.1L/h	4391*1608*2109	5800
DSJGF-800SC	800/880	1000/1100	1440A	6KTAA25-G321	6	170*185	25.2L	75L	212.8L/h	4391*1608*2109	5800
DSJGF-900SC	900/1000	1125/1250	1620A	6WTAA35-G310	6	186*215	35.1L	100L	259.2L/h	4530*1975*2477	7450
DSJGF-1000SC	1000/1100	1250/1375	1800A	6WTAA35-G311	6	186*215	35.1L	100L	286.0L/h	4530*1975*2477	7450



WEICHAI Series



Weichai Power Co., Ltd. was founded in 2002 by the Weifang Diesel Engine Factory then as the main initiator and jointly established by domestic and foreign investors. It is the first enterprise in China's internal combustion engine industry listed in Hong Kong stock market, and also the first company that has both listed in China Mainland and Hong Kong stock markets through stock swap based on acquisition. The Company has Weichai Power engine, Shacman heavy-duty truck, Weichai Lovol smart agriculture, Fast transmission, Hande axle, Torch spark plug, KION, Linde hydraulic, Dematic, PSI, Baudouin, Ballard and other well-known brands at home and abroad.

Weichai Power generator power range from 10-1000kw, this generator set use the diesel power engine from Weichai independent research and development, equipped with famous generator and control panel. Power engine series include WP4、WP6、WP10、WP12、WP13 and baudouin etc, Using these power engines with world and domestic well-known brand generator to produce the domestically advanced generator sets.

Standard configuration

- | | | | |
|-----------------|--------------|--------------------------------------|----------------------------|
| ✓ Diesel engine | ✓ Alternator | ✓ 40°C water cooled radiator | ✓ Intelligent controller |
| ✓ Steel base | ✓ out switch | ✓ Silencer and flexible exhaust hose | ✓ maintenance-free battery |

Optional configuration

- | | | | |
|--------------------------|------------------|--|-----------------------|
| <i>e</i> Soundproof case | <i>e</i> ATS | <i>e</i> 50°C water cooled radiator | <i>e</i> Water heater |
| <i>e</i> Oil heater | <i>e</i> Trailer | <i>e</i> Automatic parallel synchronizing control system | |



WEICHAI Series diesel generator



Model	KW	KVA	Current	Engine Mode	CDSJinder	Bore×Stroke	Engine capacity	Lub capacity	Consumption	Size(mm)	Weight(kg)
DSJGF-18WC	18/20	22.5/25	32.4A	WP2.3D25E200	4	89*92	2.3L	8.5L	5.89L/h	1450*700*1100	550
DSJGF-26WC	26/28	32.5/35	46.8A	WP2.3D33E200	4	89*92	2.3L	8.5L	7.68L/h	1450*700*1100	550
DSJGF-30WC	30/33	37.5/41	54A	WP2.3D40E200	4	89*92	2.3L	8.5L	9.21L/h	1600*760*1200	580
DSJGF-36WC	36/40	45/50	64.8A	WP2.3D48E200	4	89*92	2.3L	8.5L	11.26L/h	1680*760*1250	650
DSJGF-50WC	50/55	62.5/69	90A	WP4.1D66E200	4	105*118	4.1L	13L	15.0L/h	1750*750*1350	830
DSJGF-65WC	65/70	81/87.5	117A	WP4.1D80E200	4	105*118	4.1L	13L	18.0L/h	1750*750*1350	900
DSJGF-80WC	80/88	100/110	144A	WP4.1D100E200	4	105*118	4.1L	13L	22.5L/h	1750*750*1350	950
DSJGF-100WC	100/120	125/150	180A	WP6D132E200	6	105*130	6.75L	18L	28.57L/h	2380*950*1450	1450
DSJGF-120WC	120/132	150/165	216A	WP6D152E200	6	105*130	6.75L	18L	32.86L/h	2450*950*1450	1550
DSJGF-150WC	Standby 150	Standby 187.5	270A	WP6D167E200	6	105*130	6.75L	18L	35.71L/h	2550*950*1500	1670
DSJGF-160WC	160/176	200/220	288A	WP10D200E200	6	126*130	9.73L	23L	42.90L/h	2800*1150*1750	1850
DSJGF-185WC	185/200	231/250	333A	WP10D238E200	6	126*130	9.73L	23L	50.91L/h	2900*1150*1750	2150
DSJGF-200WC	200/220	250/275	360A	WP10D264E200	6	126*130	9.73L	23L	56.57L/h	2900*1150*1750	2300
DSJGF-250WC	250/280	312.5/350	450A	WP10D320E200	6	126*130	9.73L	23L	68.59L/h	3000*1150*1750	2500
DSJGF-250WC	250/300	312.5/375	450A	WP12D353E200	6	126*155	11.60L	24L	/	3100*1200*1850	2650
DSJGF-300WC	300/320	375/400	540A	WP13D385E200	6	127*165	12.54L	36L	82.08L/h	3050*1250*1820	2800
DSJGF-320WC	320/350	400/437.5	576A	WP13D405E200	6	127*165	12.54L	36L	86.30L/h	3050*1250*1820	3000
DSJGF-350WC	350/400	437.5/500	630A	WP13D440E310	6	127*165	12.54L	36L	91.93L/h	3050*1250*1820	3300
DSJGF-400WC	400/440	500/550	720A	WP13D490E310	6	127*165	12.54L	36L	105.53L/h	3150*1250*1850	3500
DSJGF-520WC	520/580	650/725	936A	6M33D633E200	6	150*185	19.6L	60.5L	134.85L/h	3800*1600*2050	4950
DSJGF-550WC	550/600	687.5/750	687.5A	6M33D670E200	6	150*185	19.6L	60.5L	143.06L/h	3800*1600*2050	5200
DSJGF-600WC	600/660	750/825	1080A	6M33D725E310	6	150*185	19.6L	60.5L	158.30L/h	3800*1600*2050	5500
DSJGF-640WC	640/720	800/900	1152A	8M33D800E200	8	150*185	26.14L	105L	/	4000*1800*2150	5800
DSJGF-720WC	720/800	900/1000	1296A	8M33D890E200	8	150*185	26.14L	105L	/	4000*1800*2150	6000
DSJGF-800WC	800/880	1000/1100	1440A	8M33D975E310	8	150*185	26.14L	105L	179.79L/h	4000*1800*2150	6600
DSJGF-650WC	650/700	812.5/875	1170A	12M26D792E200	12	150*150	31.8L	113L	168.00L/h	4300*1990*2150	6900
DSJGF-720WC	720/800	900/1000	1296A	12M26D902E200	12	150*150	31.8L	113L	191.33L/h	4300*1990*2300	7000
DSJGF-800WC	800/880	1000/1100	1440A	12M26D968E200	12	150*150	31.8L	113L	205.33L/h	4300*1990*2300	7200
DSJGF-900WC	900/1000	1125/1250	1620A	12M33D1108E200	12	150*185	39.2L	146L	233.77L/h	4750*2194*2400	8000
DSJGF-1000WC	1000/1100	1250/1375	1800A	12M33D1210E200	12	150*185	39.2L	146L	255.36L/h	4750*2194*2400	8200
DSJGF-1100WC	1100/1200	1375/1500	1980A	12M33D1320E200	12	150*185	39.2L	146L	278.57L/h	4750*2194*2400	8500
DSJGF-1200WC	1200/1400	1500/1750	2160A	12M33D1500E310	12	150*185	39.2L	146L	313.39L/h	4750*2194*2400	9000
DSJGF-1250WC	1250/1400	1562.5/1750	2250A	16M33D1530E310	16	150*185	52.3L	180L	314.40L/h	5200*2250*2620	11680
DSJGF-	1320/1440	1650/1800	2376A	16M33D1580E310	16	150*185	52.3L	180L	323.45L/h	5200*2250*2620	11800

1320WC												
DSJGF-1400WC	1400/1520	1750/1900	2520A	16M33D1680E310	16	150*185	52.3L	180L	323.45L/h	5200*2250*2620	12000	
DSJGF-1500WC	1500/1650	1875/2062.5	2700A	16M33D1800E310	16	150*185	52.3L	180L	346.07L/h	5200*2250*2620	12200	
DSJGF-1600WC	1600/1800	2000/2250	2880A	16M33D1980E310	16	150*185	52.3L	180L	407.14L/h	5200*2250*2620	12300	
Model	KW	KVA	Current	Engine Mode	CDSJinder	Bore×Stroke	Engine capacity	Lub capacity	Consumption	Size(mm)	Weight(kg)	
DSJGF-1600WC	1600/1800	2000/2250	2880A	20M33D2020E310	20	150*185	65.4L	240L	/	6950*2680*2980	18000	
DSJGF-1800WC	1800/2000	2250/2500	3240A	20M33D2210E310	20	150*185	65.4L	240L	/	6950*2680*2980	18000	
DSJGF-1800WC	1800/2000	2250/2500	3240A	12M55D2210E310	12	180*215	65.65L	480L	400.83L/h	5800*2250*2200	13000	
DSJGF-2000WC	2000/2200	2500/2750	3600A	12M55D2450E310	12	180*215	65.65L	480L	484.52L/h	5800*2250*2200	13500	
DSJGF-2200WC	2200/2400	2750/3000	3960A	12M55D2700E310	12	180*215	65.65L	480L	532.98L/h	5800*2250*2200	13800	
DSJGF-2250WC	2250/2475	2812.5/3094	4050A	16M55D2750E310	16	160*190	87.5L	500L	/	6000*2260*2800	13300	
DSJGF-2400WC	2400/2650	3000/3312.5	4320A	16M55D2900E310	16	160*190	87.5L	500L	/	6000*2260*2800	13500	
DSJGF-2600WC	2600/3000	3250/3750	4680A	16M55D3300E310	16	160*190	87.5L	500L	/	6000*2260*2800	14000	
DSJGF-3000WC	3000/3300	3750/4125	5400A	16M55D3600E310	16	160*190	87.5L	500L	/	6000*2260*2800	14500	